

# Informer

Double sided display with hidden poster change mechanics.



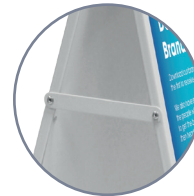
- Double sided 20" x 30" poster display.
- Anti-glare PET poster covers with magnetic seals offer excellent poster security and weather resistance.
- Poster release: simply push poster cover out of frame via hidden release hole in back panel.
- White polyester powder coated steel frame as standard.
- Custom colours available made to order (minimum order quantity 200).
- Colour matched white printed borders to poster covers.
- Folds flat for storage.
- Optional chalk insert panels available.



Magnetic sealed poster covers.



Hidden poster cover release hole in back panel.



Hinged side locking arm.



Moulded feet.

   Fully Recyclable

Poster Size	Display Area (mm)	O/A Dimensions (w x h x d mm)	Weight (kg)	Order Code
20" x 30"	505 x 759	570 x 890 x 550	12	IN230W(W)