

Centro 2 Straight & Curved

Assembly Instructions

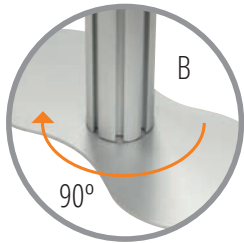
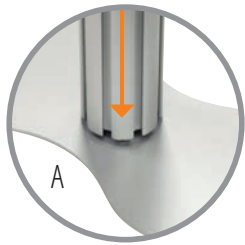
Centro  Now with
T-Loc Connections



1

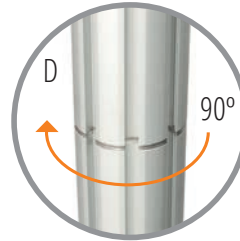
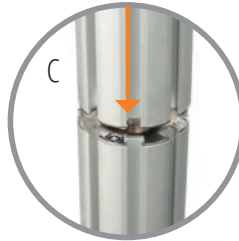


Place base plates on the floor, position lower posts centrally over male fitting of base plate (A), and rotate until assembly drops into position, continue rotating clockwise through 90° to secure (B).



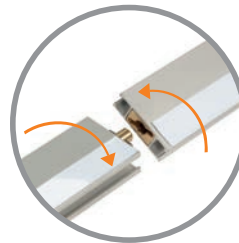
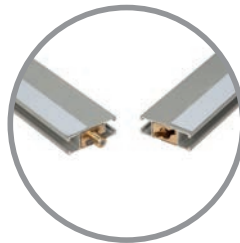
2

Affix upper posts to lower posts by positioning female end centrally over male fitting (C), and rotate until assembly drops into position, continue rotating clockwise through 90° to secure (D).



3

Assemble 750mm horizontal profiles by slotting and twisting together to join. Carefully rest ends of first horizontal assembly on base plates between posts.



4



Slot T-Loc clamps of assembled profile into post channels and close T-Loc levers to secure.

5



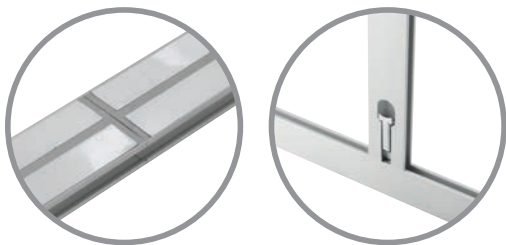
Assemble 950mm vertical profiles in the same way as 750mm profiles, ensuring the steel fixing strips are aligned.

6



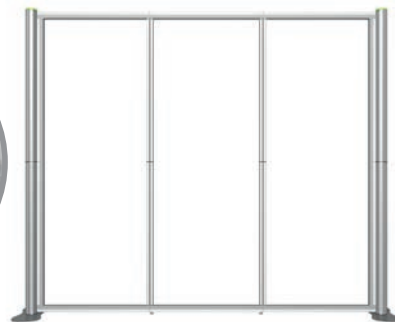
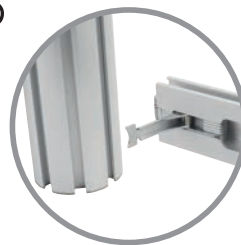
Ensuring the single steel strip of first vertical rail is adjacent to post, slot T-Loc clamp into channel of horizontal at the corner. Close T-Loc levers to secure and repeat for opposite vertical rail.

7



Clamp the middle vertical rails with twin steel fixing strips, halfway across the joints of 750mm bottom horizontal profiles.

8



Link final 750mm horizontal profiles, and with the steel strip uppermost, slot onto top of vertical rails and channel of posts. Close remaining T-Loc levers to finish assembly of the framework.

9



Starting from the top left-hand side of the system, unroll the first graphic panel and align the magnetic tape with the steel fixing strips of the framework. Work across the frame, taking care not to crease the graphic panel. Repeat for remaining graphic panels to complete assembly of the display.

